

# Continental Drift

What is continental drift?



THE AMOEBA PEOPLE  
present

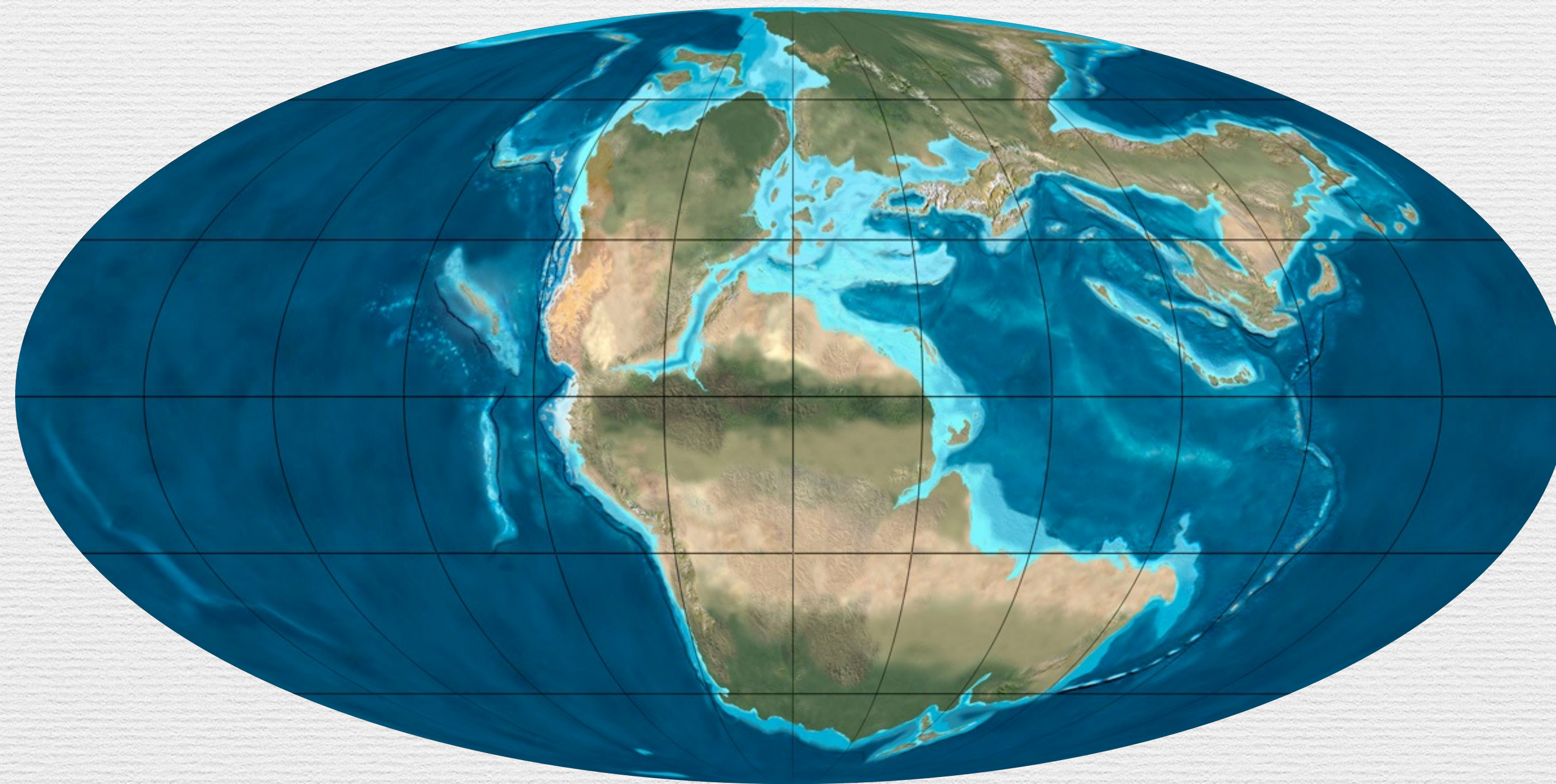
The Amoeba People





# Continental Drift

- Continental Drift - the theory that all of the continents were once joined together in a single landmass and have since drifted apart





# Continental Drift

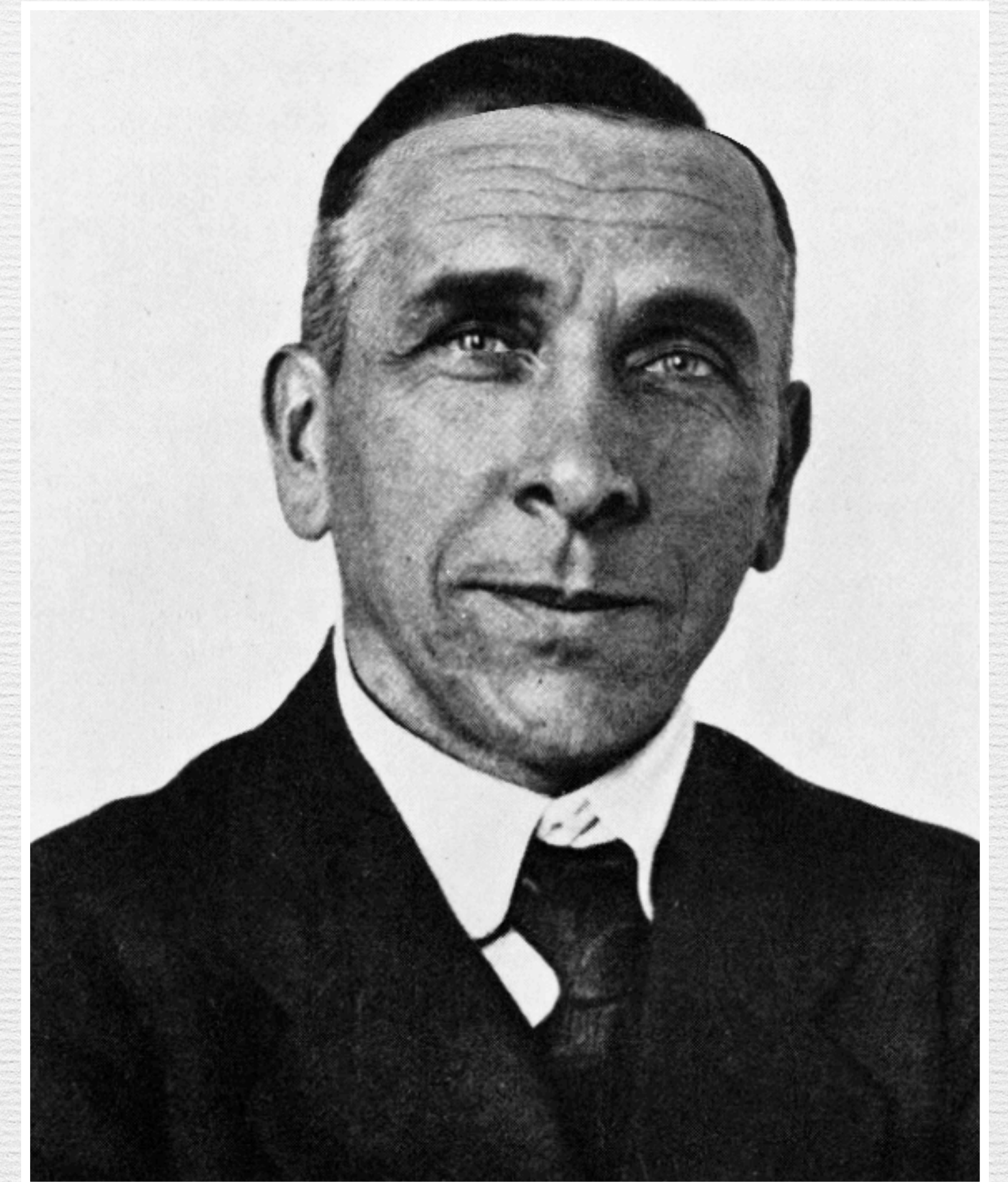
- Pangaea - “all Earth” or name given to the super continent that existed 200 million years ago





# Continental Drift

- Alfred Wegener, 1915
  - German geologist and meteorologist
  - Proposed the theory of continental drift
  - Hypothesized a super continent





*Animated Life:*

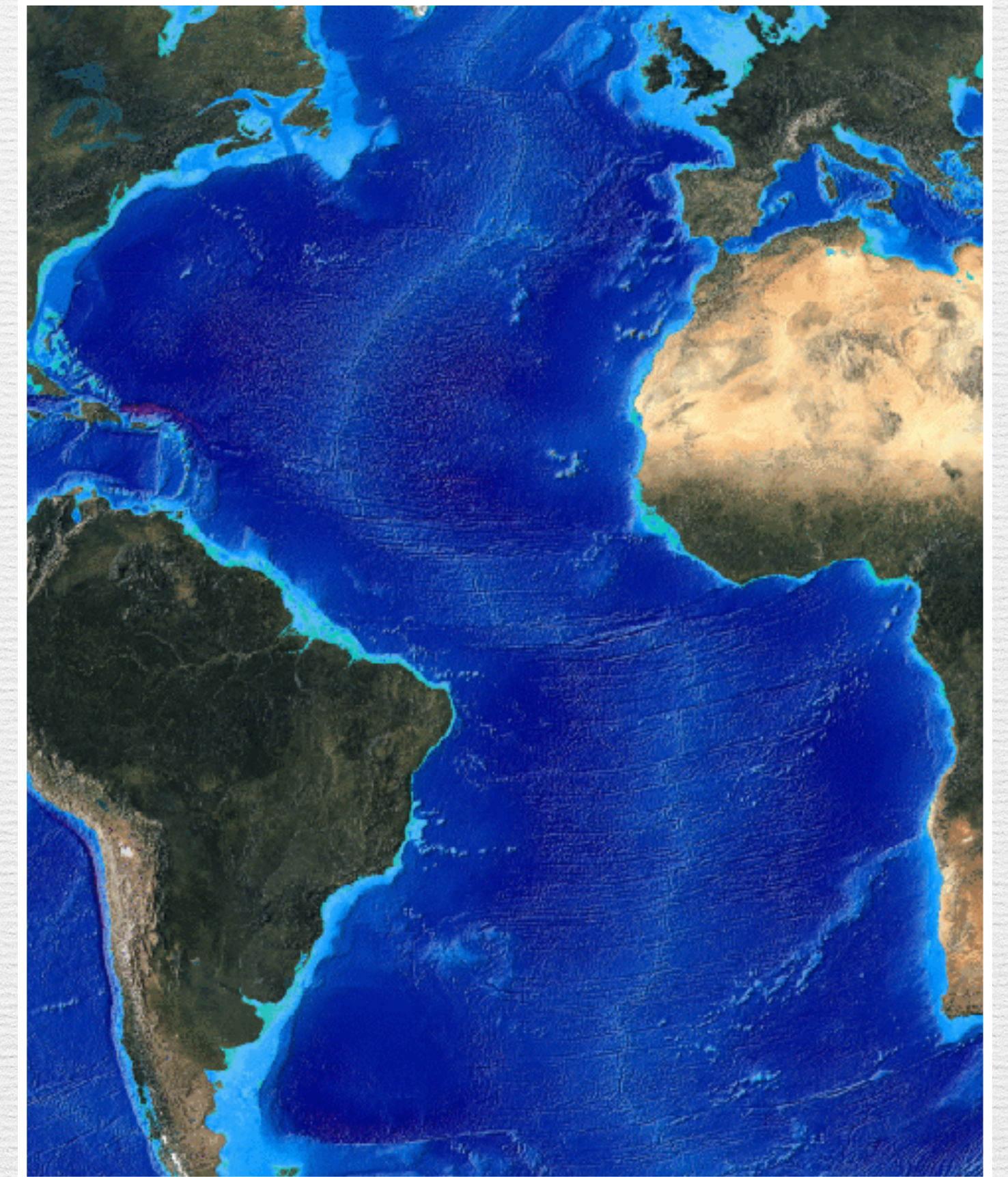


PANGEA



# Continental Drift

- Evidence of Continental Drift
  1. Similarities in the shape of Africa's west coast and South America's east coast





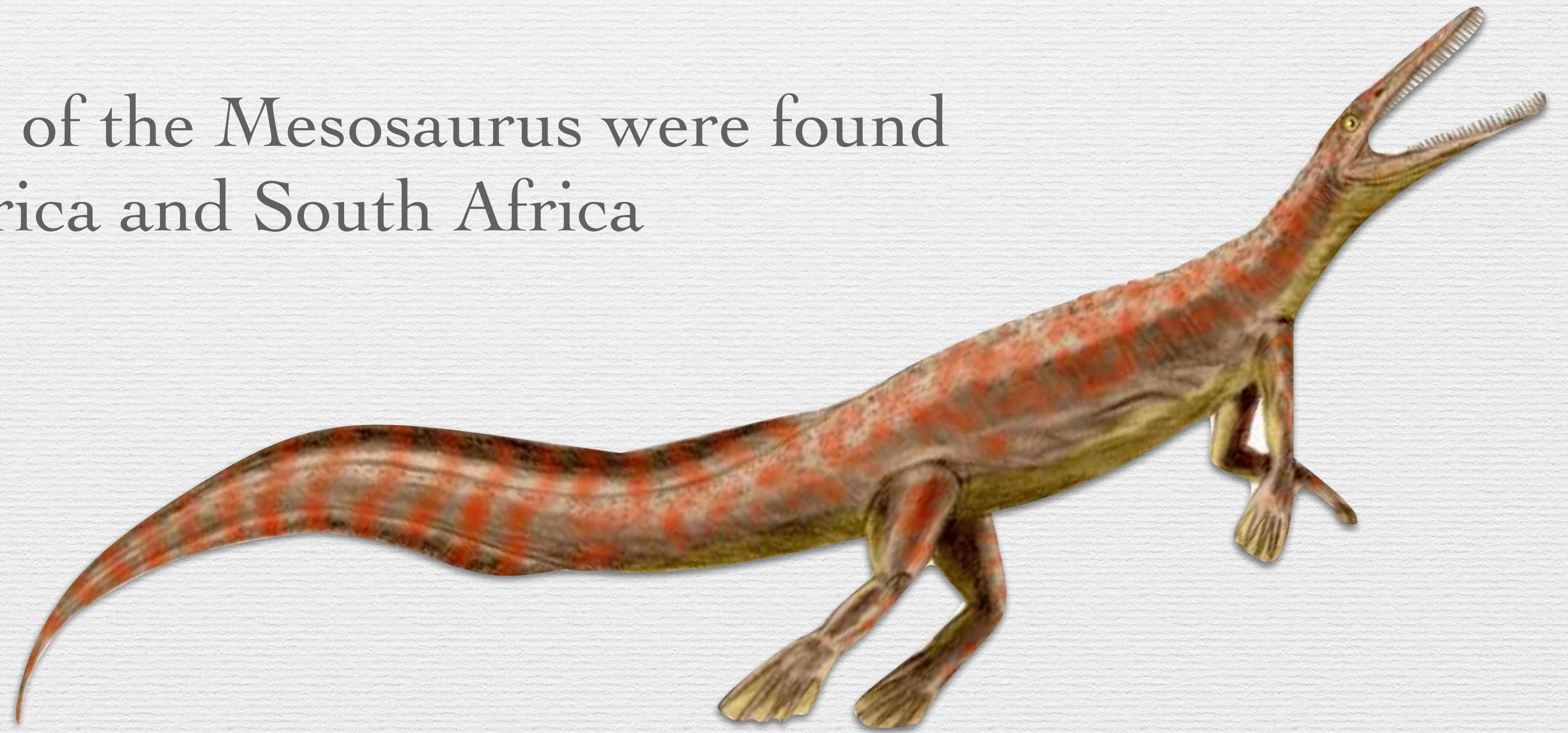


Jigsaw Fit of the Continents



# Continental Drift

- Evidence of Continental Drift [continued]
  2. Fossil remains of the *Mesosaurus* were found in South America and South Africa







Mesosaurus Size





Mesosaurus Size



# Continental Drift

- Evidence of Continental Drift [continued]
  3. Fossil remains of the *Glossopteris* were found throughout India, South America, Africa, and Antarctica







Fossilized *Glossopteris* Leafs



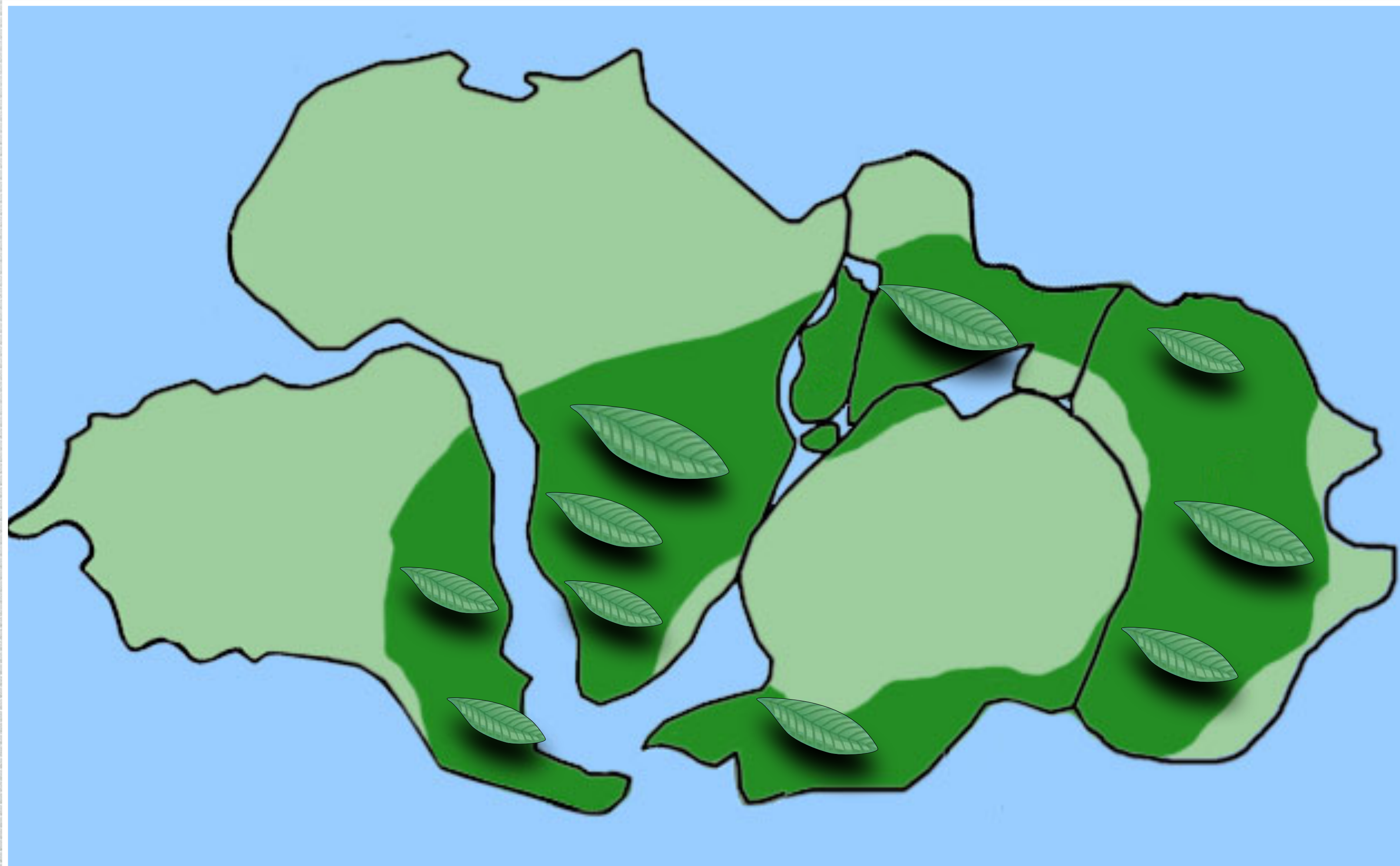


Plate Movement



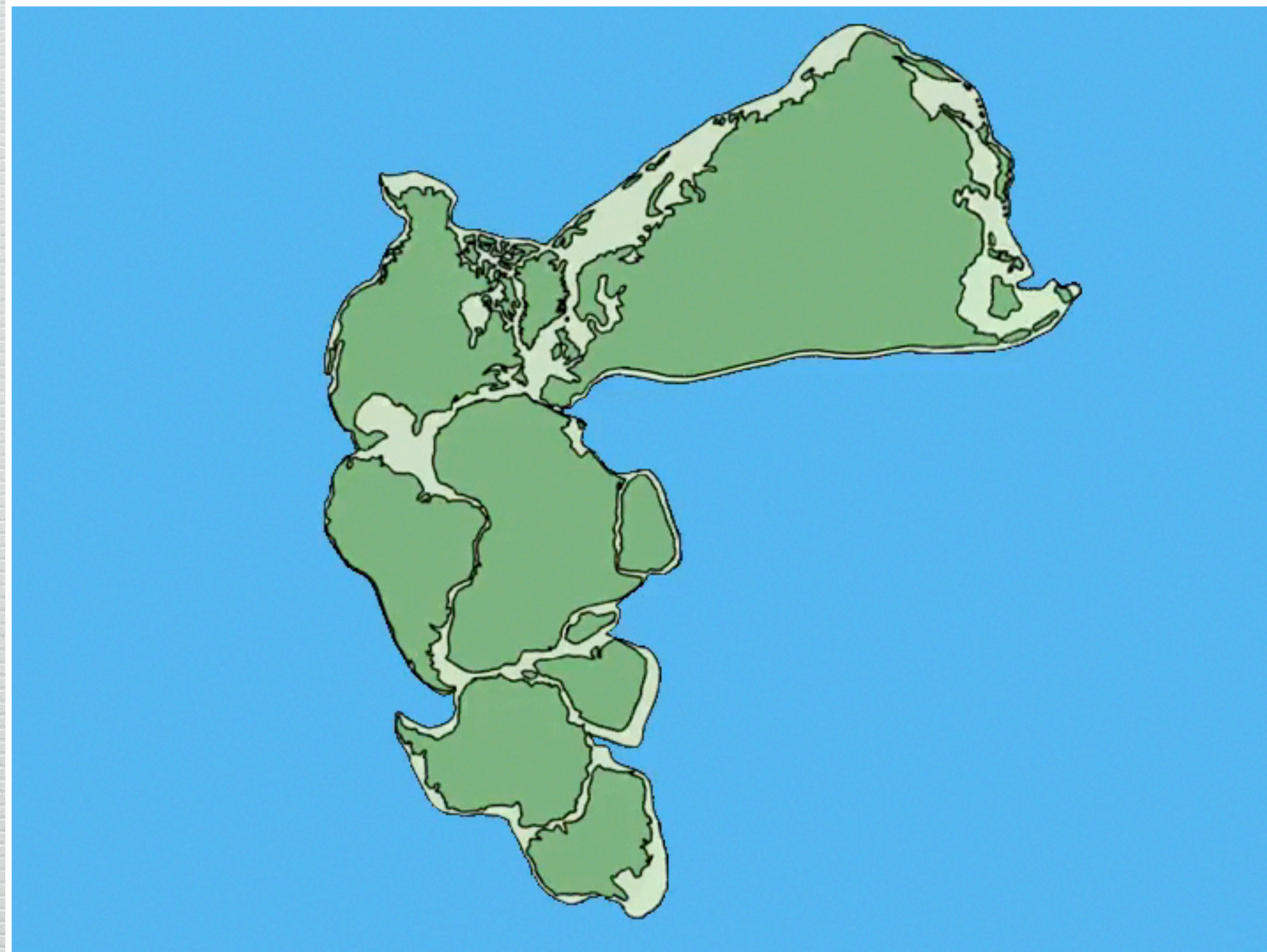
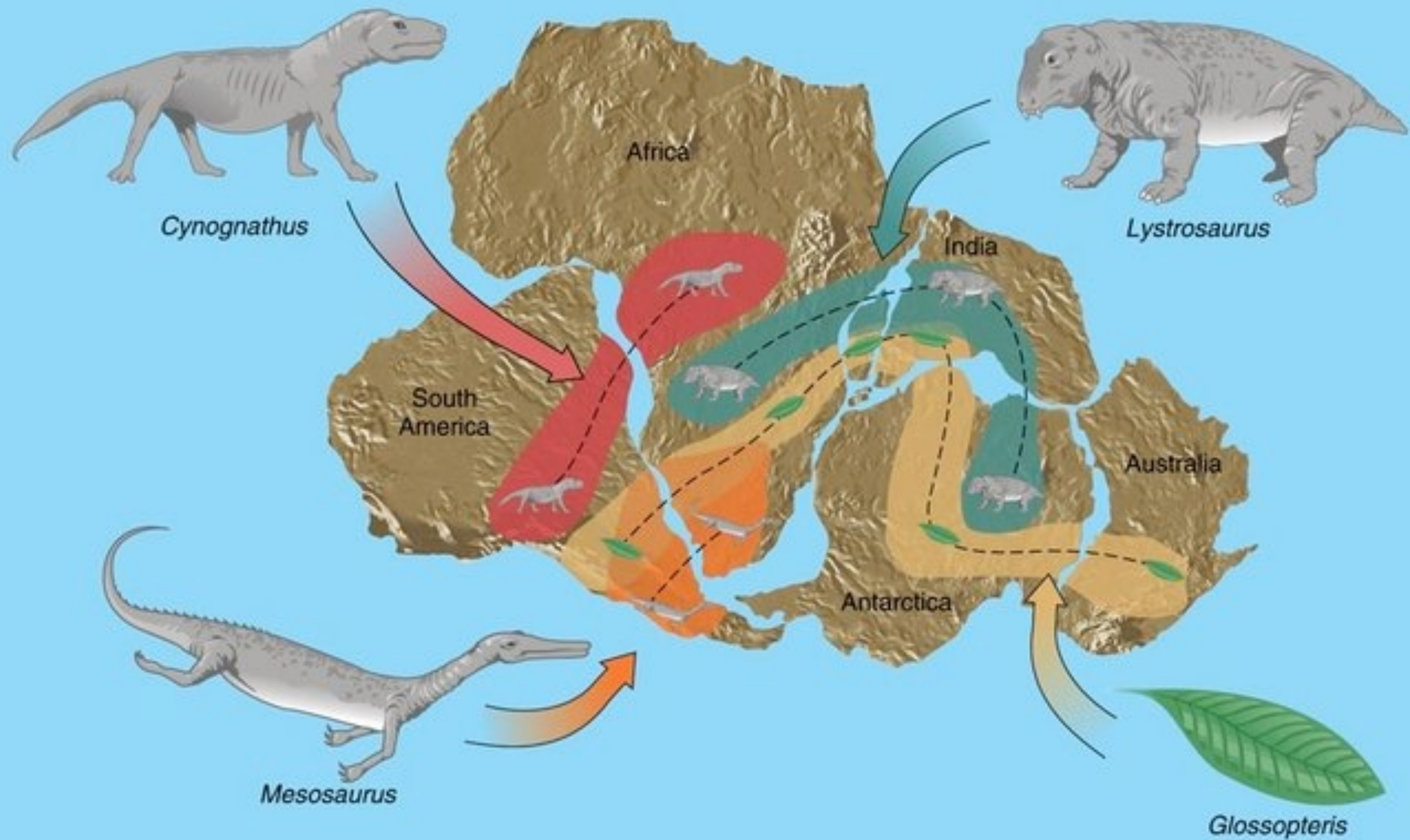


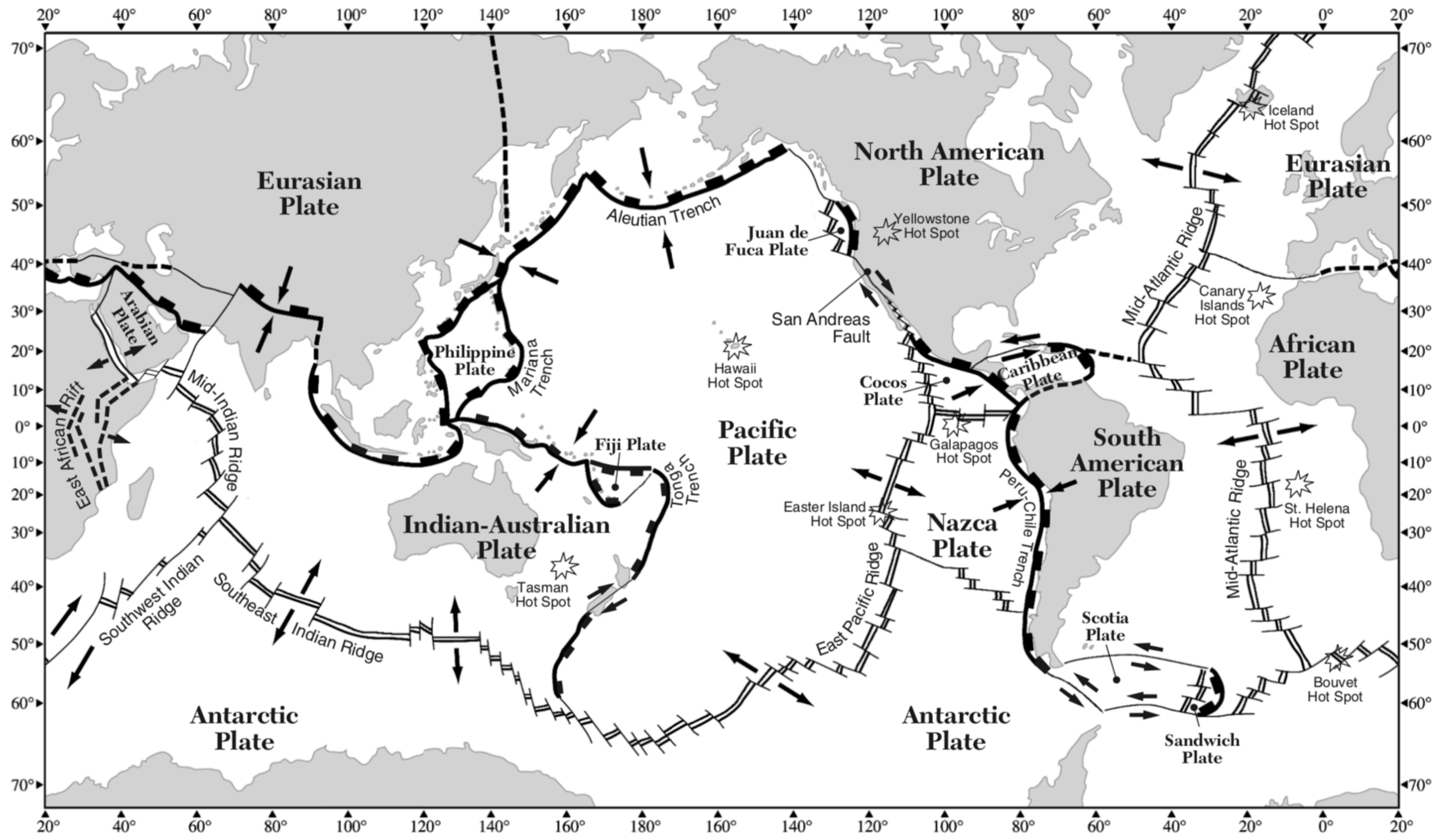
Plate Movement







# Tectonic Plates





[earthtoleigh.com](http://earthtoleigh.com)